

Description

- 1.No external power, reducing installation costs, and can be used for dangerous and dirty place.
- 2.Suitable for steam and compressed air systems. Ratio up to 20:1 pressure regulator to control accurately.
- 3.Through the precise control of process temperature, improve product quality and improve efficiency.
- 4.A variety of temperature control, up to 160 °C, suitable for the vast majority of process technology.

Selection of possible applications

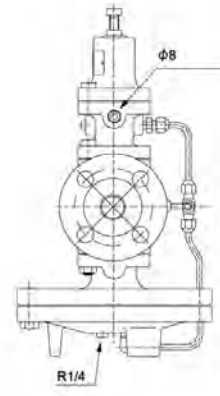
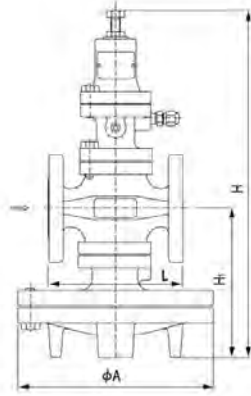
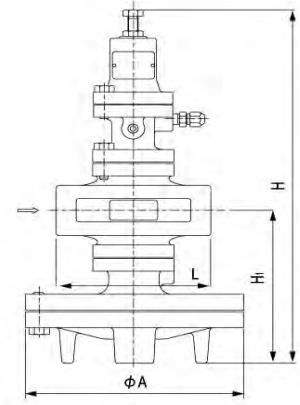
The DFV is a piloted reducing valve for capacity requirements. Applications such as heat exchangers, steam coils, rotating dryers, process equipment and heating systems. With a 20:1 rangeability and accurate (+/-1% of pressure) over a long, trouble-free service life. Hardened stainless steel working parts.

Selection of possible flow media

Steam, gases, hot water (other flow media on request)

Dimensions/weights(Threaded)

Size	L(mm)	H1(mm)	H(mm)	A(mm)	Weights (kg)
1/2"(DN15)	150	170	398	200	14.0
3/4"(DN20)	150	170	398	200	14.0
1"(DN25)	160	175	404	226	18.5
1-1/4"(DN32)	180	192	434	226	21.5
1-1/2"(DN40)	180	192	434	226	21.5
2"(DN50)	230	216	498	276	33.0



Dimensions/weights(Flange)

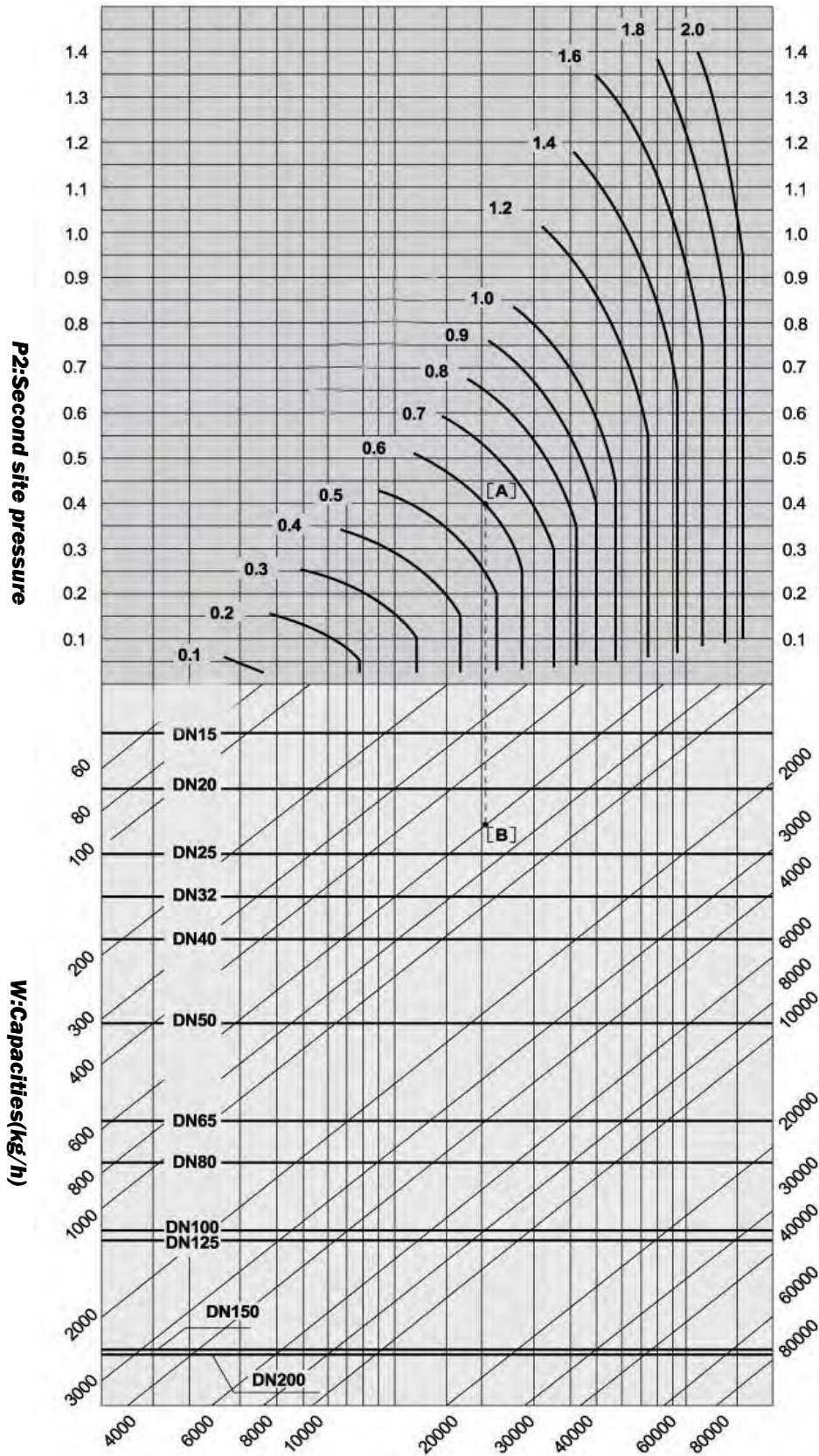
Size	L(mm)	H1(mm)	H(mm)	A(mm)	Weights(kg)
1/2"(DN15)	146	170	398	200	15.5
3/4"(DN20)	146	170	398	200	16.0
1"(DN25)	156	175	404	226	21.0
1-1/4"(DN32)	176	192	434	226	24.0
1-1/2"(DN40)	196	192	434	226	24.5
2"(DN50)	222	216	498	276	36.0
2-1/2"(DN65)	282	251	552	352	64.5
3"(DN80)	302	264	575	352	71.5
4"(DN100)	342	321	658	401	111.0
5"(DN125)	400	321	658	401	115.0
6"(DN150)	465	414	814	502	234.0
8"(DN200)	469	414	814	502	242.0

Capaticies-steam(Kg/h)

Inlet Pressure psig	Outlet Pressure psig	Connection size									
		1/2"	3/4"	1"	1-1/4"	1-1/2"	2"	2-1/2"	3"	4"	6"
	C.V. Factors Ī	3.48	6.5	10.5	14	20	35	56	74	115	260
15	10	95	175	285	380	540	950	1,500	2,000	3,100	7,000
	5	135	250	405	545	780	1,365	2,185	2,890	4,480	10,170
	3	155	285	465	620	880	1,550	2,470	3,260	5,080	11,440
20	12	120	230	365	490	700	1,225	1,960	2,590	4,025	9,100
	8	155	290	470	630	900	1,575	2,520	3,330	5,175	11,700
	0-5	180	335	540	720	1,025	1,795	2,870	3,790	5,895	13,325
25	15	145	270	435	580	830	1,450	2,325	3,070	4,770	10,790
	10	195	360	580	775	1,110	1,950	3,110	4,110	6,385	14,430
	0-7	205	385	620	825	1,180	2,065	3,305	4,360	6,785	15,340
30	20	155	290	470	630	900	1,575	2,520	3,330	5,175	11,700
	15	220	410	665	890	1,270	2,220	3,555	4,700	7,300	16,510
	0-12	230	430	695	925	1,320	2,310	3,695	4,885	7,590	17,160
40	30	155	290	470	630	900	1,575	2,520	3,330	5,175	11,700
	25	250	470	755	1,010	1,440	2,520	4,030	5,330	8,280	18,720
	0-18	280	525	850	1,135	1,620	2,835	4,535	5,995	9,315	21,060
50	40	190	355	575	770	1,100	1,925	3,080	4,070	6,325	14,300
	30	315	585	955	1,275	1,820	3,185	5,095	6,735	10,465	23,660
	0-21	350	650	1,050	1,400	2,000	3,500	5,600	7,400	11,500	26,000
60	45	280	520	840	1,120	1,600	2,800	4,480	5,920	9,200	20,800
	35	360	670	1,080	1,440	2,060	3,605	5,770	7,620	11,845	26,780
	0-27	385	720	1,165	1,555	2,220	3,885	6,215	8,215	12,765	28,860
75	60	280	525	850	1,135	1,620	2,835	4,535	5,995	9,315	21,060
	50	415	775	1,250	1,665	2,380	4,165	6,665	8,800	13,685	30,940
	0-35	470	875	1,415	1,890	2,700	4,725	7,560	9,990	15,525	35,100
85	70	290	540	870	1,160	1,660	2,905	4,650	6,140	9,545	21,580
	50	490	915	1,480	1,965	2,820	4,935	7,895	10,435	16,215	36,660
	0-43	515	960	1,555	2,070	2,960	5,180	8,290	10,950	17,020	38,480
100	80	370	690	1,115	1,485	2,120	3,710	5,935	7,845	12,190	27,560
	60	580	1,080	1,740	2,325	3,320	5,810	9,295	12,285	19,090	43,160
	0-48	600	1,120	1,815	2,420	3,460	6,055	9,690	12,800	19,895	45,000
125	100	440	825	1,335	1,780	2,540	4,445	7,110	9,400	14,600	33,000
	80	680	1,275	2,060	2,745	3,920	6,860	10,975	14,500	22,540	50,960
	0-62	730	1,365	2,200	2,940	4,200	7,350	11,760	15,540	24,150	54,600
150	125	490	910	1,470	1,960	2,800	4,900	7,840	10,360	16,100	36,400
	100	800	1,490	2,400	3,205	4,580	8,015	12,825	16,945	26,335	59,540
	0-76	860	1,600	2,590	3,460	4,940	8,645	13,830	18,280	28,400	64,220
175	150	490	915	1,480	1,975	2,820	4,935	7,895	10,435	16,125	36,660
	125	870	1,630	2,635	3,515	5,020	8,785	14,055	18,570	28,865	65,260
	0-87	985	1,840	2,970	3,960	5,660	9,900	15,850	20,950	32,545	73,580
200	150	840	1,600	2,540	3,390	4,840	8,470	13,550	17,900	27,830	65,920
	125	1,075	2,000	3,240	4,330	6,180	10,815	17,300	22,870	35,530	80,340
	0-103	1,125	2,100	3,390	4,520	6,460	11,300	18,000	23,900	37,145	83,980
225	175	840	1,650	2,670	3,560	5,080	8,890	14,225	18,800	29,210	66,000
	150	1,160	2,180	3,500	4,660	6,660	11,655	18,650	24,640	38,300	86,600
	0-117	1,250	2,340	3,780	5,000	7,200	12,600	20,160	26,640	41,400	93,600
250	200	925	1,730	2,790	3,720	5,320	9,300	14,900	19,680	30,600	69,200
	150	1,340	2,500	4,050	5,400	7,720	13,500	21,600	28,600	44,400	100,360
	0-131	1,385	2,590	4,180	5,570	7,960	13,930	22,300	29,450	45,800	103,500
273	225	880	1,640	2,650	3,530	5,050	8,830	14,130	18,670	29,000	66,000
	200	1,240	2,320	3,750	4,990	7,130	12,480	19,960	26,400	41,000	93,600
	0-145	1,510	2,830	4,570	6,090	8,700	15,230	24,360	32,200	50,000	113,600
300	250	920	1,720	2,780	3,700	5,290	9,250	14,800	19,600	30,400	69,200
	225	1,250	2,330	3,770	5,020	7,170	12,550	20,100	26,500	41,300	93,600
	0-160	1,640	3,070	4,960	6,600	9,440	16,520	26,400	34,900	54,300	123,600

Selection Chart

P1: First site pressure



Application

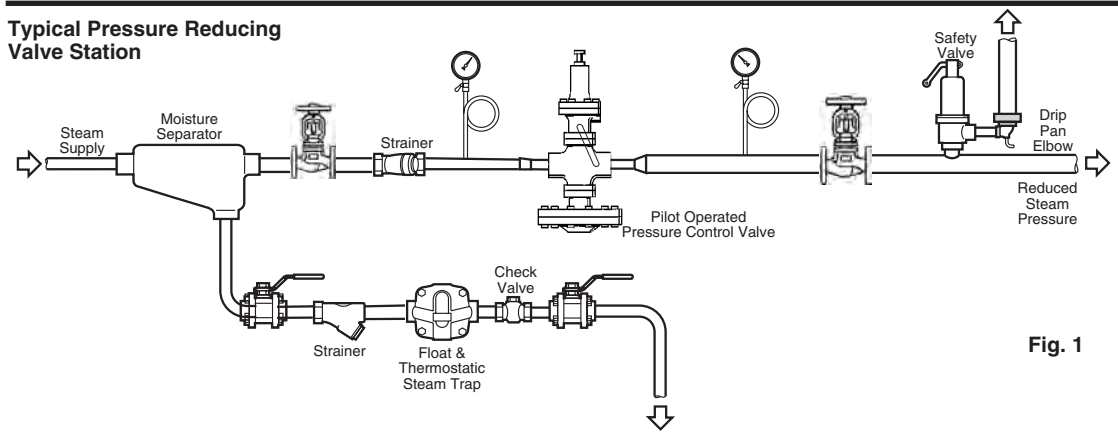


Fig. 1

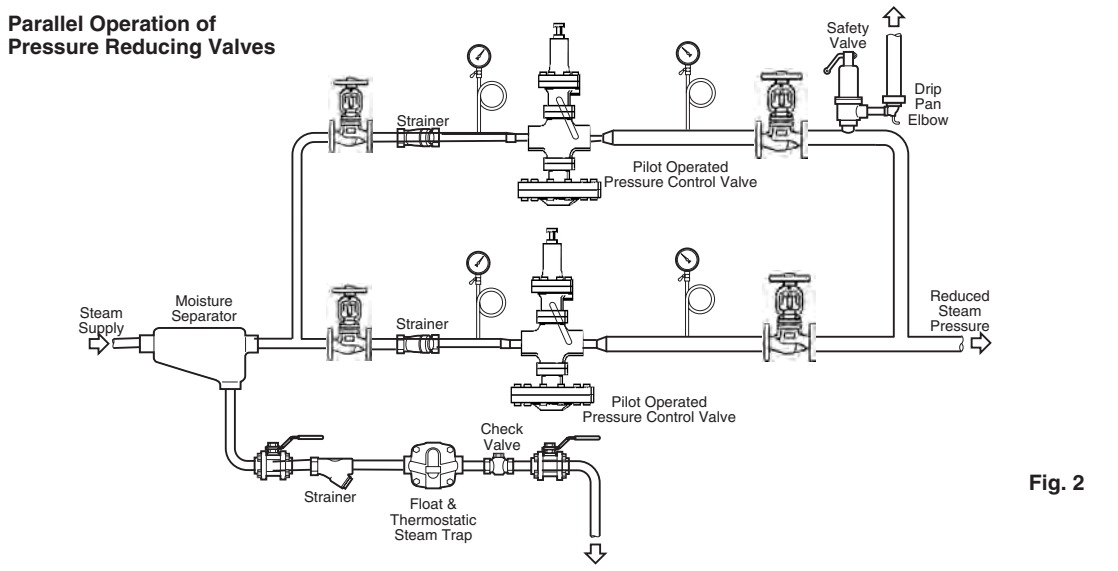


Fig. 2

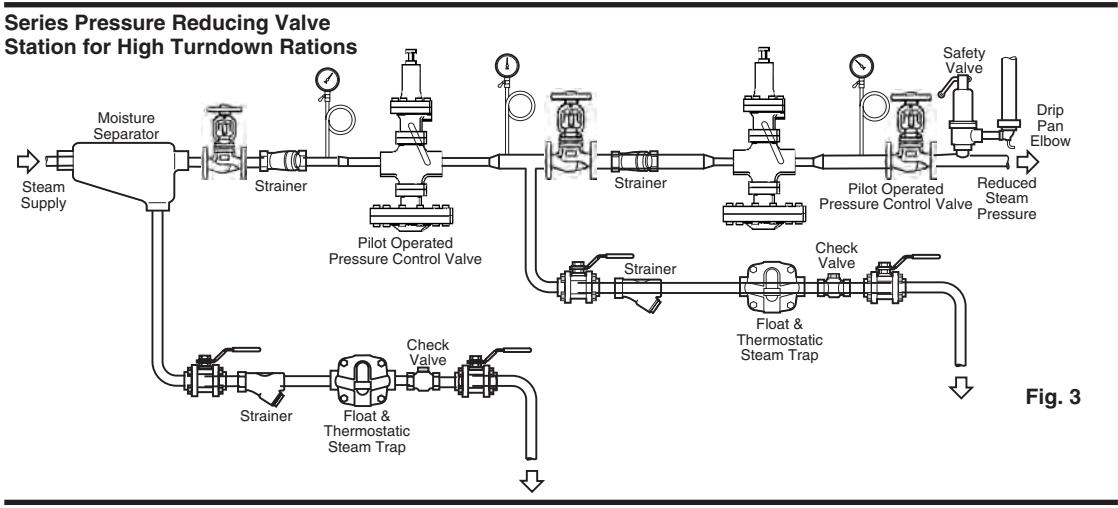


Fig. 3